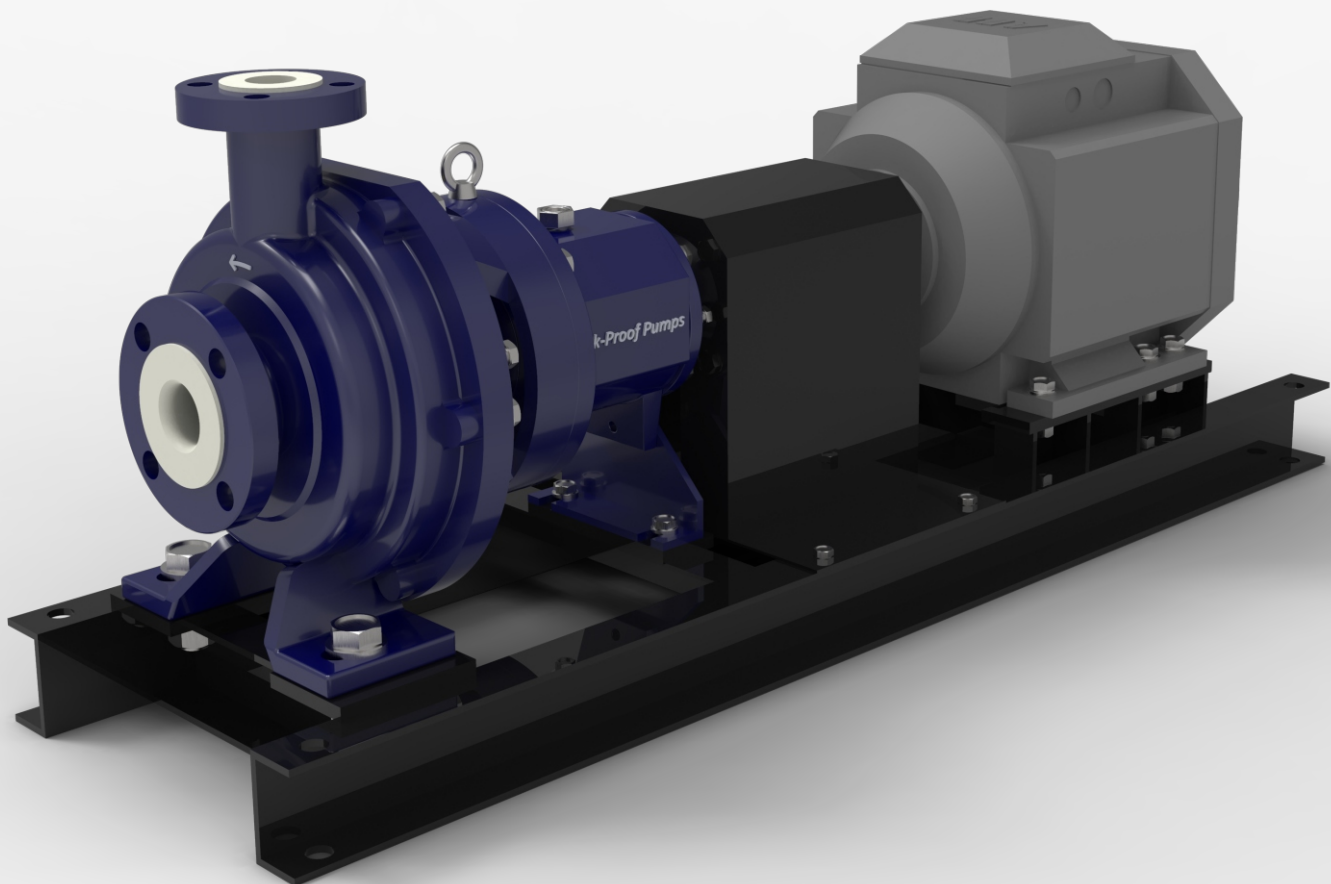




*Leak-Proof Pumps Pvt.Ltd.*



High efficiency solid thermoplastic lined end suction pump for aggressive fluids.



ISO 5199 | ISO 2858

Chemical process pumps since 1989

SERIES PKZ

PP  
PVDF  
FEP  
PFA

## Series overview

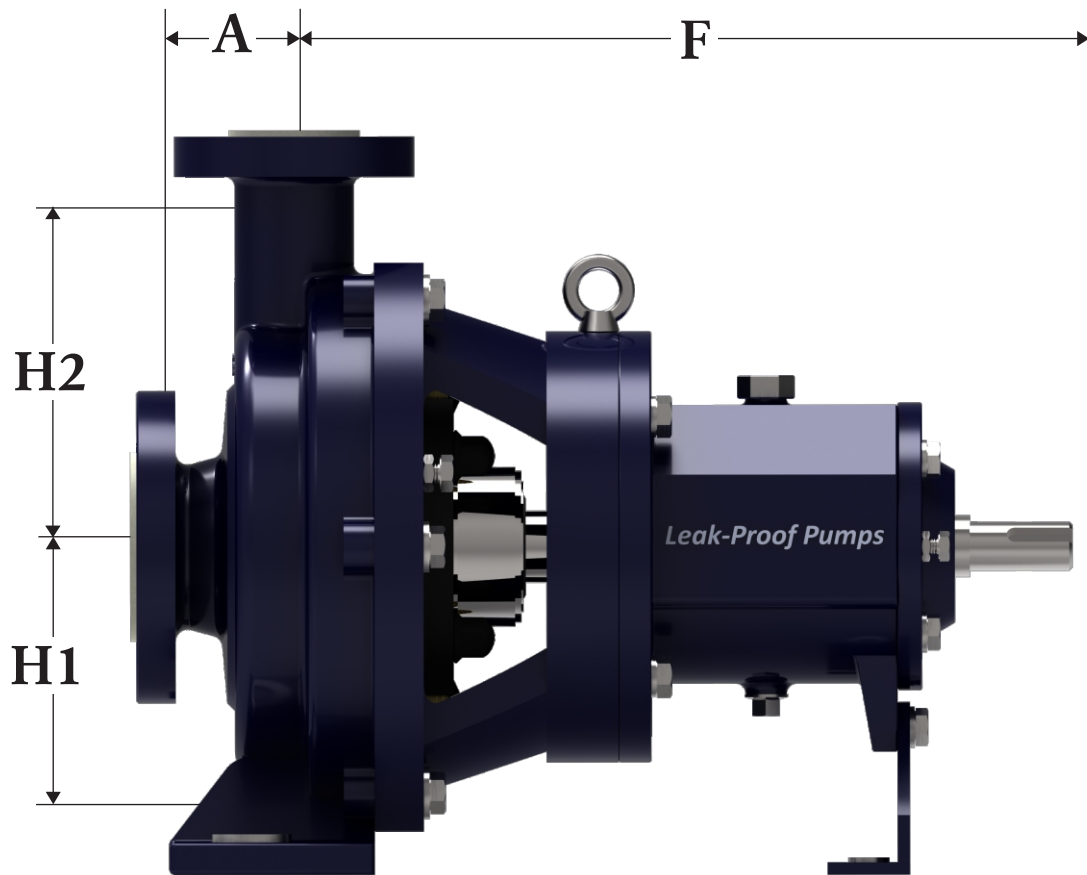
Series pkz are cs/ss lined with thermoplastic using unique lining Process free from adhesive bonding, having robust design to handle Highly corrosive and aggressive fluid. These pumps incorporate back Pull-out features. This feature offers all the advantages of easy Maintenance similar to metallic pumps. These pumps are available in Verity of lining material to withstand severe corrosion and Temperature conditionswhemes



## Technical data

Capacity up to (m <sup>3</sup> /hr)	400
Head up to (m)	100
Max working pressure (bar)	16
Flange class	class 150 #RF
Frequency	50/60 Hz
Poles	2/4 poles
Motor power up to	110kw
Max. Viscosity	200cp
Max. specific gravity	1.84
Max temperature	230 C
Nozzle connection	1"- 2.5"
Main material	PVDF, FEP, PFA
Impeller type	Semi open
Mechanical seal	single/ double
BEP up to	70%

## Pump Dimensions

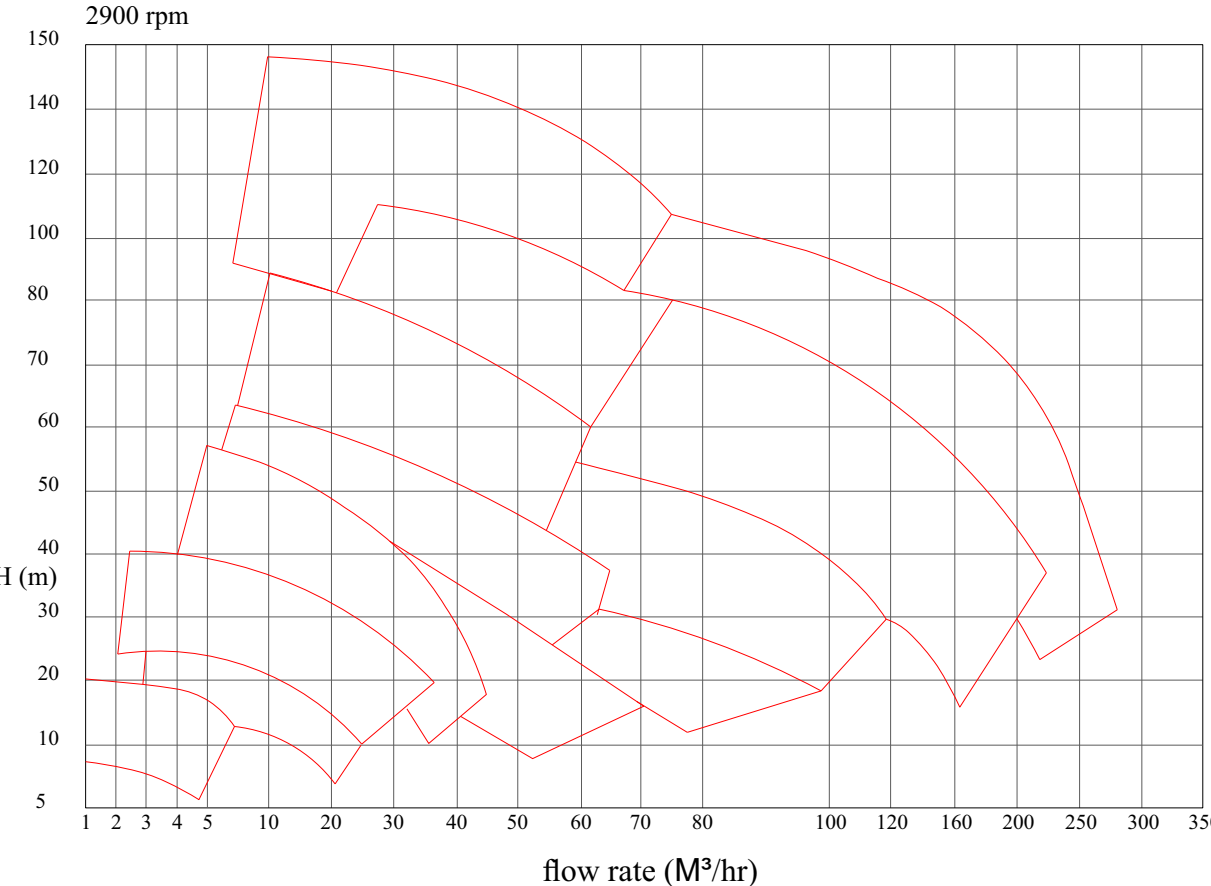
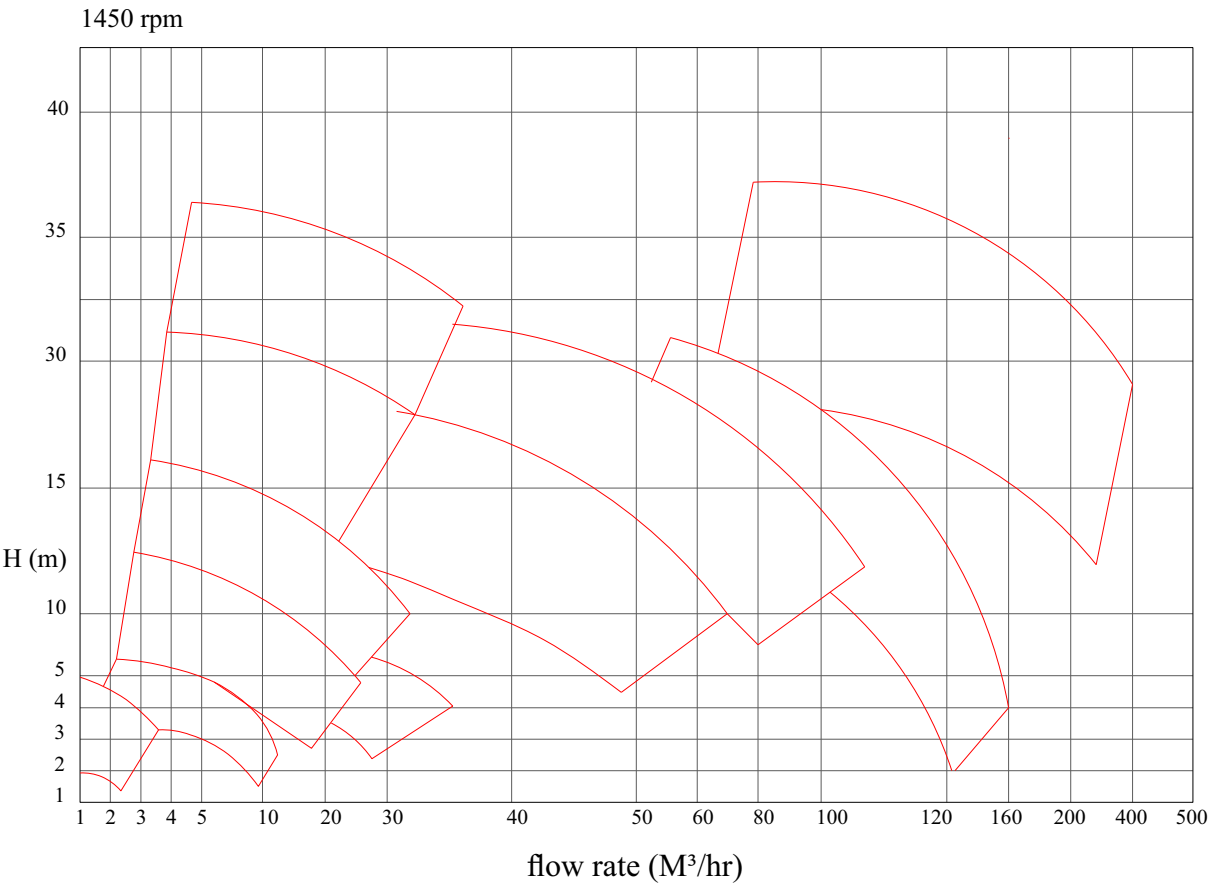


MODEL	IN	OUT	A	F	H1	H2
PKZ 25-100	25	25	70	35	124	136
PKZ 32-160	50	32	80	387	160	203
PKZ 32-200	80	32	110	385	180	229
PKZ 40-125	40	40	80	385	112	140
PKZ 40-160	50	40	83	385	160	205
PKZ 40-200	75	40	110	385	180	229
PKZ 40-250	75	40	100	516	200	225
PKZ 50-160	80	50	100	404	180	209
PKZ 50-200	80	50	101	395	160	200
PKZ 50-315	80	50	125	540	280	315
PKZ 65-160	80	65	102	432	180	227
PKZ 65-200	80	65	125	505	200	250
PKZ 65-250	100	65	125	505	250	285
PKZ 80-250	100	80	125	500	250	285
PKZ 100-250	150	100	127	500	250	285
PKZ 150-315	200	150	60	70	315	400

## Application

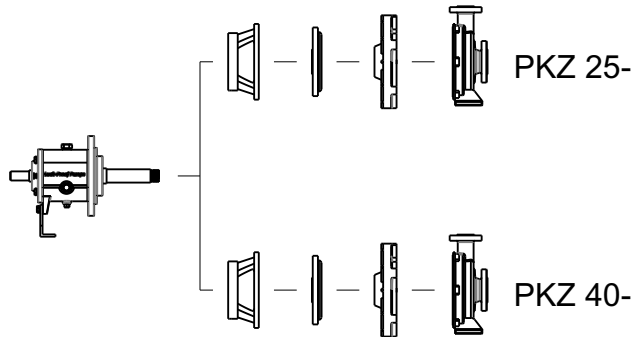
The series PEZ, RDZ, KRZ thermoplastic pumps are solution of choice for pumping fluids posing an environment or health hazard such as acid, alkalis, solvent, or chemically polluted fluid in the presence or absence of solids.

# Performance curve

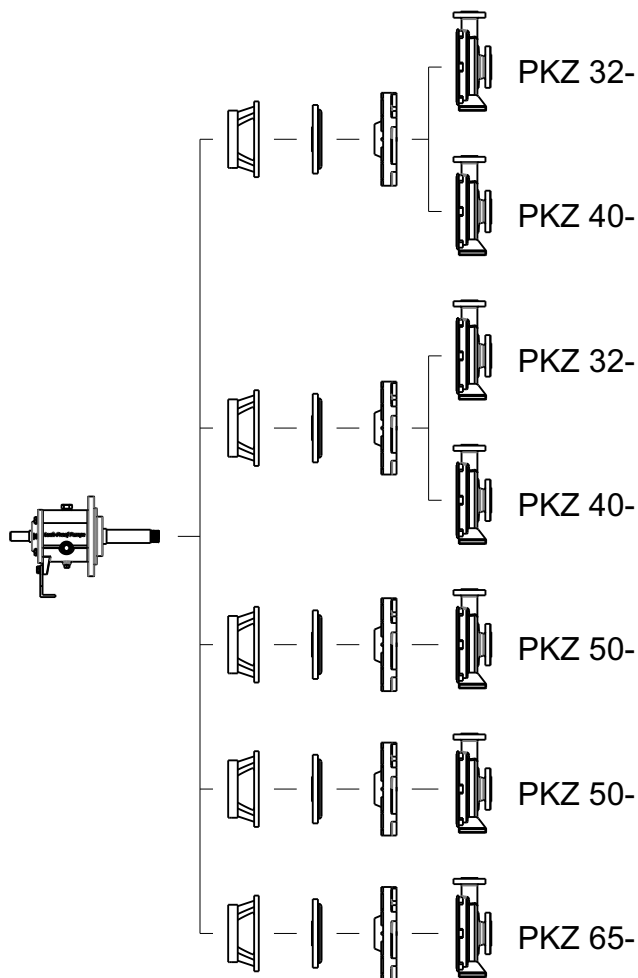


# Interchangeability

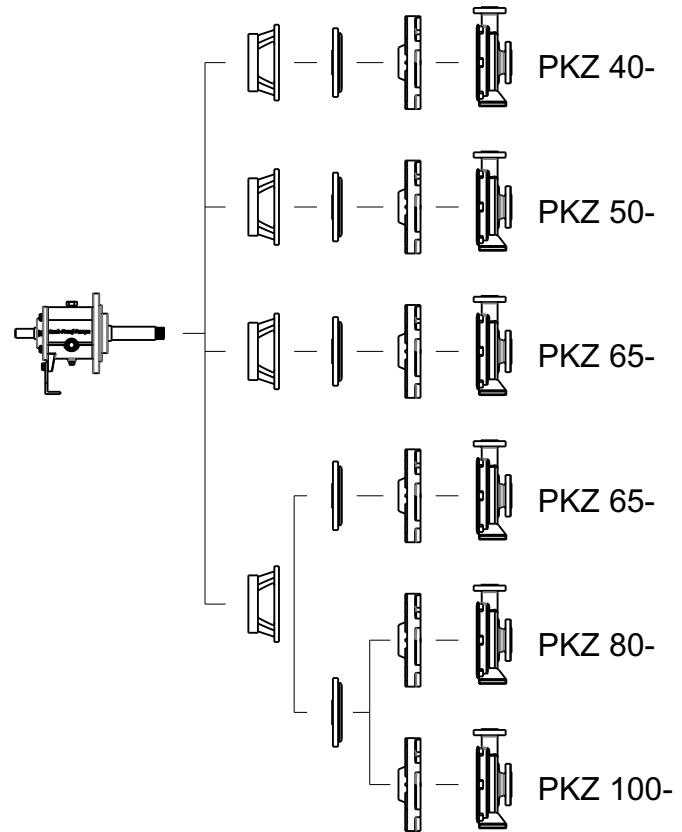
## hPOWER END 1



## POWER END 2



## POWER END 3



## DESIGN FEATURES

- Wide verity of hydraulic to match all type duty point
- Robust construction is designed for improved reliability
- Extended mtbf with new power end
- Back-pull out design provide safe simple assembly and disassembly of pump
- Robust shaft with low stiffness ration to ensure low deflection at seal face
- High wall thickness of non metallic wetted parts.
- Metal reinforced impeller for improved performance
- Low noise and vibration
- Premium service duty thrust bearing for longer services life
- Three power-end covers entire range, helps in reducing spares required.



## Major vendor enlistment



## Regional offices

Ahmedabad  
 ahmedabad@leakproofpumps.com  
 Vapi  
 vapi@leakproofpumps.com  
 Vizag  
 vizag@leakproofpumps.com  
 Uttarakhand  
 uttarakhand@leakproofpumps.com  
 Delhi  
 delhi@leakproofpumps.com

Bharuch  
 bharuch@leakproofpumps.com  
 Kolkata  
 kolkata@leakproofpumps.com  
 Bengaluru  
 bengaluru@leakproofpumps.com  
 Chennai  
 chennai@leakproofpumps.com  
 Hyderabad  
 hyderabad@leakproofpumps.com

Kerala  
 kerala@leakproofpumps.com  
 Baroda  
 baroda@leakproofpumps.com  
 Chandigarh  
 chandigarh@leakproofpumps.com  
 Pune  
 pune@leakproofpumps.com  
 Kochi  
 kochi@leakproofpumps.com

## Corporate office

207, IVY center, Jogeshwari west, Mumbai 400102  
 022-26799777 sales@leakproofpumps.com

## Manufacturing Unit

E-1 AMSER Industrial estate, Pirojpora 385210, North Gujarat  
 02739-270151 mfg@leakproofpumps.com

